

TECHNICAL DATA

Series NG fully automatic gas burners Models NG9/NG13

BURNER CAPACITY

NG9

146 kW to 264 kW.
500,000 to 900,000 Btu/h.

NG13

264 kW to 381 kW.
900,000 to 1,300,000 Btu/h.

Developed from field experience in the UK and overseas markets, the NG series sets new standards in efficient and reliable operation. Developed to current and future test authority requirements in UK and overseas markets. Delivered ready to install with pre-wired packaged control system and simple plug in gas train arrangements. On/Off versions are fitted with a single, multifunctional valve.

AIR REGULATION

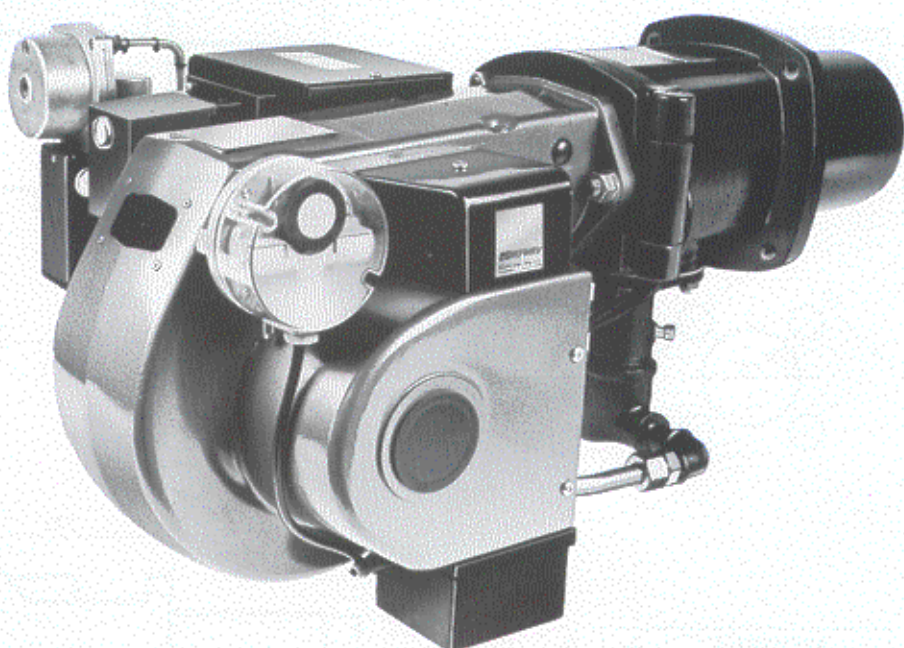
Air for combustion can be adjusted to give maximum efficiency. A patented air control device produces smooth start conditions. A fully closing air control is fitted as standard on the two stage (high/low) burner, and is an optional extra on the single stage (on/off) burner.

CONTROLS

Flame supervision is by ionisation probe and automatic sequence control.

OPERATION

Single and two stage operation. (On/Off and High/Low).
And Modulating operation.



FUEL

Natural gas at 178mm (7" WG)
Special requirements on request—
i.e. Liquid Petroleum Gas/Town Gas.

ELECTRICAL DATA

	1 phase 3 phase	
Mains Supply	(V) 220/240	380-415
	+ 10% - 15%	
Frequency	(Hz) 50	50
Burner Motor	(W) 250	250
Start Current	(A) 15	3.5
Main Fuse	(A) 10	5

APPROX. WEIGHT

48 kg.

MODEL

NG9 NG13

ORDERING INFORMATION

When ordering models NG9-NG13 burners please provide the following information in order to expedite your order.

Type of appliance with which the burner is to be used.

Appliance rating and resistance.

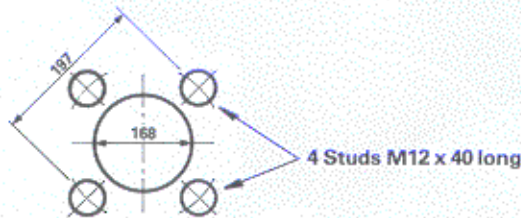
Specification of electrical supply locally available, i.e. voltage and frequency.

Type of gas and pressure available.

Single or two stage operation.

DIMENSIONS

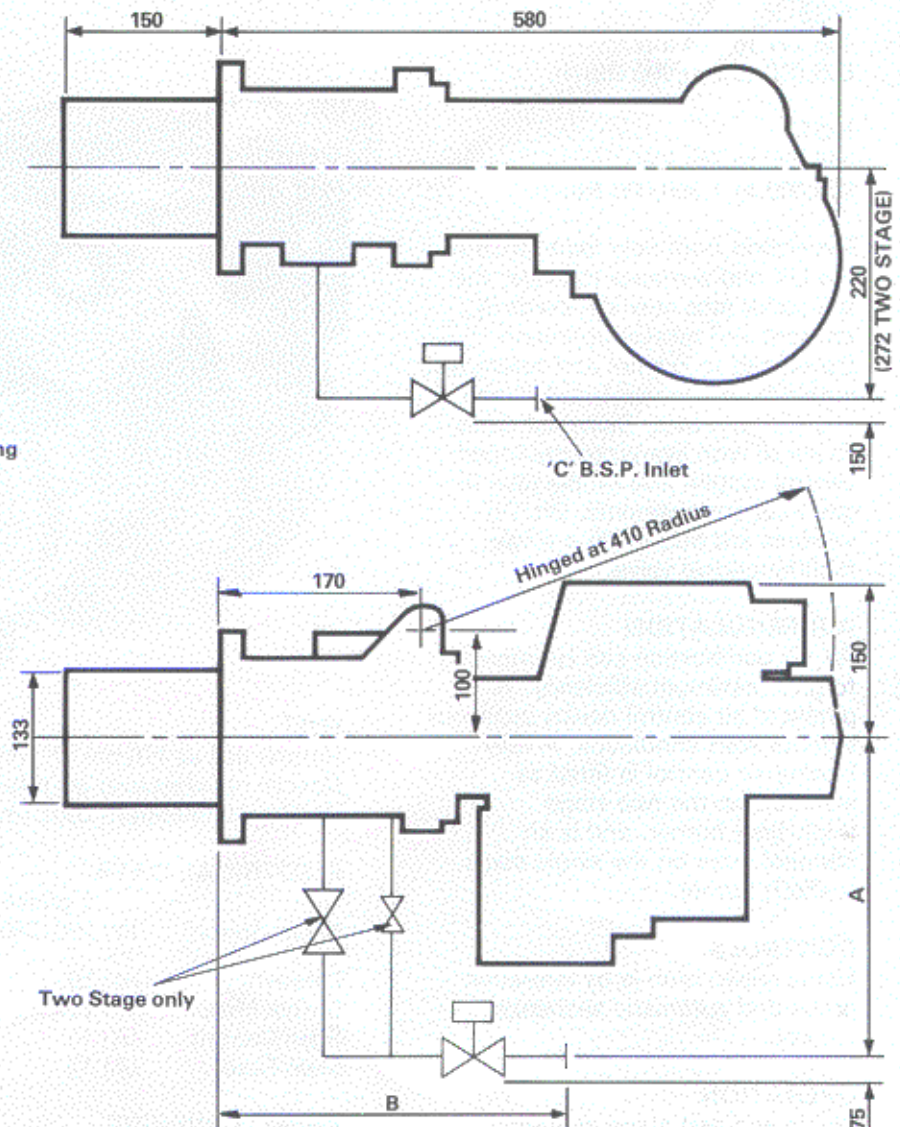
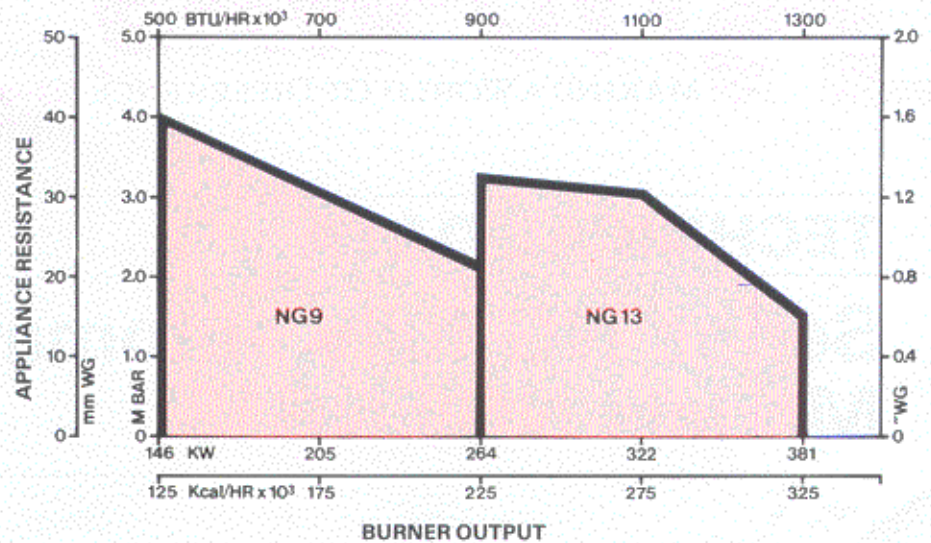
All dimensions are in mm's.



MODEL		A	B	C
NG9	S	320	415	1"
	T	235	535	1"
NG13	S	320	440	1 1/2"
	T	415	670	1 1/2"

S = Single Stage T = Two Stage

BURNER SELECTION CHART



Nu-way Limited, P.O. Box 1 Vines Lane, Droitwich, Worcestershire. WR9 8NA, England.

Tel: Droitwich (01905) 794242 (Direct Dial) & 794331

Facsimile: (01905) 794017 & Spares (01905) 795829

Email: info@nu-way.co.uk

WOLSELEY plc
A member of the Wolseley plc Group

Nu-way policy is one of continuous improvement. The right to change prices and specifications without notice is reserved



ISSUE 3/99